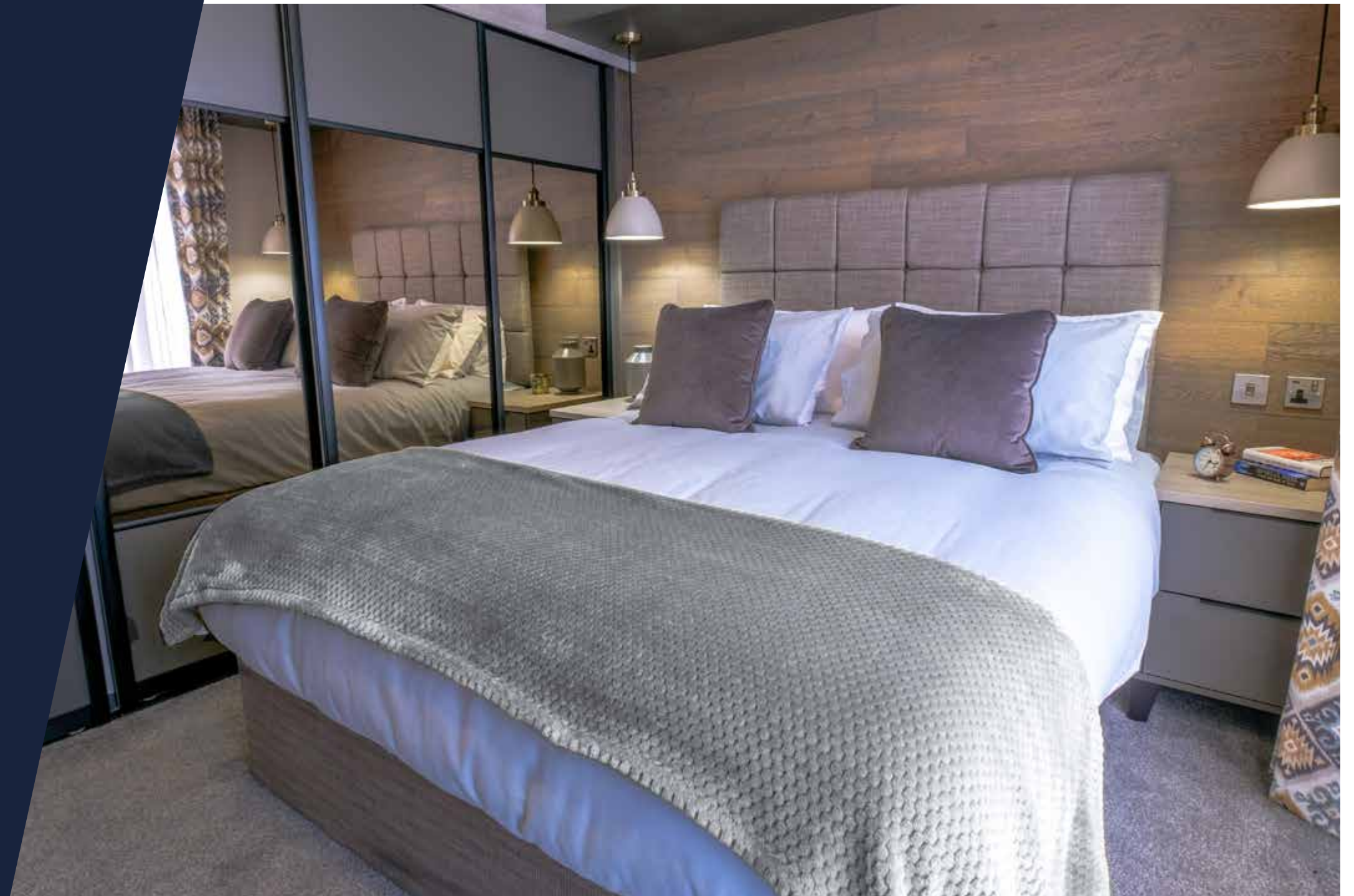


THE Lakewood

The Lakewood Lodge is our flagship model for a reason. Perfect for entertaining, the Lakewood Lodge is designed to bring family and friends together. Its modern open-plan design with front aspect French doors and windows offer a real sense of space while the kitchen area features integrated appliances, a large dining area, and a slick handleless finish. An en-suite adjoins the statement master bedroom and, with a second bedroom and bathroom also included, there's room for all the family.

Unpack your bags, relax and put your feet up. Let the Lakewood Lodge transport you to your dream holiday.





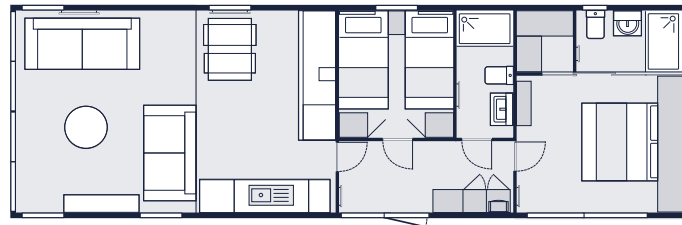
Lakewood

SPECIFICATIONS

Why not add your own touch of luxury and additional functionality with the following options:

Platinum pack

- Bluetooth surround sound system
- Trace heating
- Connection for washing machine
- Artefoam Cladding
- BS3632:(2015) residential specification



SIZES

1. 42 ft x 13 ft 2 Bedrooms
2. 42 ft x 14 ft 2 Bedrooms (Residential Standard BS3632)

Lifestyle pack

(Included as standard)

- Gas condensing combi boiler
- Thermostatic radiators
- Low-E glass on all double glazing

INTERIOR

Beadless internal wallboards and MDF tongue and groove fluted ceiling	✓
Bluetooth surround sound system	P / O
Brushed metal switches and sockets	✓
Velux roof windows in living area	O
Fluted privacy glass (in entrance doors, bathrooms windows, glazed internal doors* and apex window)	✓
Gas condensing combi boiler with thermostatic radiators	✓
Entrance hall	✓
Trace heating	P / O

KITCHEN/DINING AREA

Integrated appliances (fridge/freezer, microwave and dishwasher)	✓
5 ring gas hob, electric oven and grill with integrated cooker hood	✓
Reginox 1.5 bowl sink with hardwood over sink chopping board	✓
Hafele domestic soft close drawers and pull out larder unit	✓
Connection for washing machine	P / O
Freestanding dining table with padded dining chairs	✓

LOUNGE

Freestanding 3 seater and 2 seater sofas	✓
3 seater sofa includes pull out bed	✓
Integrated electric fire with built-in cabinet surround and coordinating coffee table	✓

TV points and electrical sockets with integrated USB ports	✓
--	---

MASTER BEDROOM

King size divan style bed (with storage), feature headboard and SoCozzee mattress	✓
Hypnos mattress	O
Bedside cabinets and matching dressing table/vanity unit with mirror	✓
NatureWall feature	✓
French or sliding doors	O
Integrated bedside/reading lighting	✓
Walk-in wardrobe with hanging space, drawers and shelving	✓
Mirrored sliding doors to provide access to en suite and walk-in wardrobe	✓
USB charging points, TV aerial point and 240v sockets	✓
Full en suite with shower, w/c and sink with vanity unit, in the same great spec as bathroom	✓
BS3632:(2015) residential specification	P / O

SECOND BEDROOM

Twin divan style beds (with storage), feature headboards and SoCozzee mattresses	✓
Bedside cabinet, coordinating storage cupboards and mirror	✓
USB charging points, TV aerial point and 240v sockets	✓

BATHROOM

Domestic shower tray with wetwall and dual thermostatic shower with fixed rainfall head	✓
Close coupled ceramic toilet with dual flush	✓
Basin with drawered vanity unit and mirrored vanity cabinet	✓
Velux roof window	✓

EXTERIOR

Timberwolf CanExel Ultraplank side feature	✓
Chateau grey aluminium cladding	✓
Artefoam Cladding	P / O

CanExel, timber and environmental coloured aluminium cladding options	O
Anthracite coloured uPVC glazing	✓
Large glazed front with French doors	✓
Exterior light	✓
Roof overhang to front aspect with LED lights	✓
Fully galvanised Protech chassis	✓
Twin axle chassis	✓

KEY: ✓ = Standard O = Optional Extra P = Platinum Pack x = Not Available

Key features:

- Contemporary open-plan living space
- Luxurious master bedroom with walk-in wardrobe and en-suite shower
- Spacious twin bedroom with single beds
- TimberWolf CanExel Ultraplank side feature focal roof overhang with LED aspect lighting
- VELUX roof windows