



Bonded walls for a more robust construction

Fusion galvanised chassis for additional protection against rust

ARDENNES



'Coastal' interior scheme



Luxury stain resistant carpet

'Coastal' interior scheme



'Scandinavian' interior scheme



'Scandinavian' interior scheme

The Ardennes holiday home offers a choice of two interior design schemes. You can opt for a stylish Scandinavian retreat with on-trend accents of grey and black, or a nautical Coastal escape with calming ocean vibes. Whatever your choice, the Ardennes is sure to impress with its spacious living area and well-designed interior.

FEATURES AT A GLANCE

Along with all the Swift key features on page 8, Ardennes comes with many desirable extras including:



Interior styles



Full window



Spacious L-shaped sofa



Freestanding dining table and chairs



Vanity area with mirror in main bathroom



USB sockets

Model size	Bedrooms	Main bed	Twin beds	Rear twin beds
28' x 12'	2	1.91m x 1.37m (6'3" x 4'6")	1.83m x 0.69m (6'0" x 2'3")	N/A
32' x 12'	2	1.91m x 1.37m (6'3" x 4'6")	1.83m x 0.69m (6'0" x 2'3")	N/A
35' x 12'	2	1.91m x 1.53m (6'3" x 5'0")	1.83m x 0.69m (6'0" x 2'3")	N/A
35' x 12'	3	1.91m x 1.37m (6'3" x 4'6")	1.83m x 0.69m (6'0" x 2'3")	1.83m x 0.69m (6'0" x 2'3")
38' x 12'	2	1.91m x 1.53m (6'3" x 5'0")	1.83m x 0.69m (6'0" x 2'3")	N/A
38' x 12'	3	1.91m x 1.53m (6'3" x 5'0")	1.83m x 0.75m (6'0" x 2'6")	1.83m x 0.75m (6'0" x 2'6")
38' x 12'	2 ES	1.91m x 1.53m (6'3" x 5'0")	1.83m x 0.69m (6'0" x 2'3")	N/A



Central heating with radiator thermostats

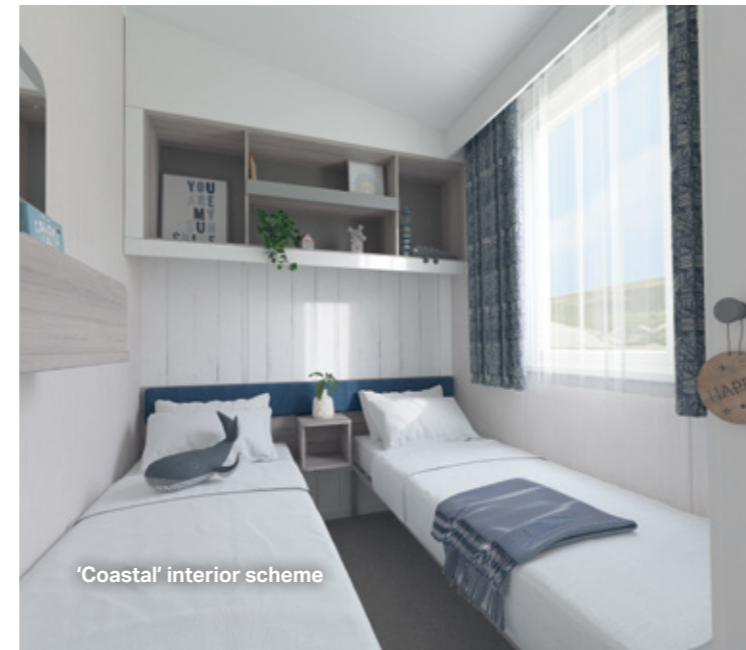
Deep and luxurious Duvalay mattress on all beds

'Scandinavian' interior scheme



Thermostatic shower

'Coastal' interior scheme



'Coastal' interior scheme

ARDENNES FEATURES

EXTERIOR

- Fusion galvanised chassis with finish warrantied for ten years
- Bonded sandwich exterior wall construction for greater strength
- Coated steel pantile roof
- Distinctive pre-coated 'folded' steel bargeboards with LED lighting to front aspect
- Woodgrain textured 'Sandy Beige' aluminium cladding
- White uPVC windows with push-button security locks
- PVC gutters and down pipes
- Low energy exterior side light

INSULATION

- Floor, roof and bonded exterior walls are insulated to provide excellent thermal performance. All external pipework is lagged to help prevent freezing. See website for further details

INTERIOR

- 7ft (2.13m) high ceilings at side walls
- Choice of two interior schemes- Scandinavian or Coastal
- Luxury lounge carpet with underlay
- Low energy LED lighting throughout
- USB sockets
- Good provision of double electric sockets throughout
- Hallway door (except 28' x 12' model)

LOUNGE

- Wide full height aspect windows
- Spacious fixed L-shape sofa with loose back cushions and scatter cushions.
- TV point with Co-Ax and 240V socket
- Window next to TV surround (35' & 38' models only)
- Lined curtains

KITCHEN / DINING

- Thetford Cocina glass fronted oven, grill and electronic ignition with improved door function, higher temperatures, burner rating and heat-up times

- Four-burner gas hob with electronic ignition and large black glass splashback
- White externally vented cooker extractor fan
- Integrated microwave oven (800w)*
- Integrated fridge and freezer
- Stainless steel sink and drainer with Chrome tap
- Freestanding dining table and chairs (two additional folding chairs in 3 bed models)

BATHROOM(S)

- Shower cubicle with thermostatic shower in main bathroom (and in en-suite with additional showers for the 38 two bed ES and 38 three bed)
- LED vanity spotlights
- Dual flush WC
- Towel radiator in main bathroom with gas central heating option
- Radiator in en suite
- Extractor fan in all shower rooms

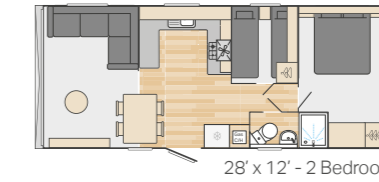
BEDROOMS

- Deep Aurora Duvalay™ mattress to all beds with Crib 5 rated fabric, and featuring 'S-Line' pocket springs and a high-density foam layer for increased and lasting comfort.
- Fabric headboard(s)
- White wood feature walls at headboard
- Bedside shelf units and overbed storage
- Vanity area with mirror and socket in main bedroom
- TV sockets & Co-Ax to all bedrooms plus booster
- Additional USB sockets to twin rooms.

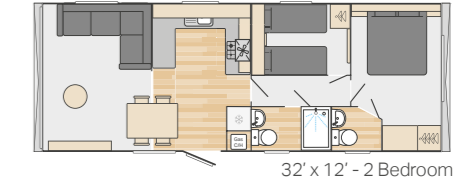
OPTIONS

- Front aspect sliding door
- Thermaglas uPVC double glazing
- Condensing gas combi-boiler central heating and hot water system with radiator thermostat
- Environmental exterior with Anthracite or green window frames
- Wireless programmable room thermostat
- Bluetooth® audio connection to lounge ceiling speakers
- Fixed L-shape sofa with fold-out occasional bed
- Assisted lift-up master bed with storage below
- Gazunder bed in one twin bedroom for extra space (one bed stores under the other when not required)
- Shaving socket in bathroom

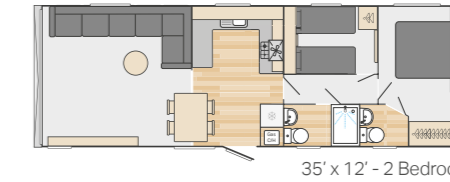
FLOORPLANS



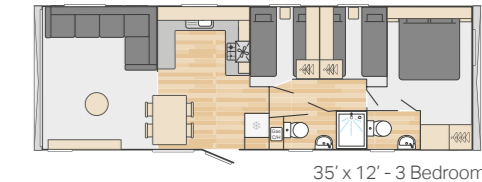
28' x 12' - 2 Bedroom



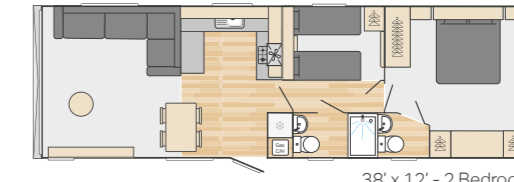
32' x 12' - 2 Bedroom



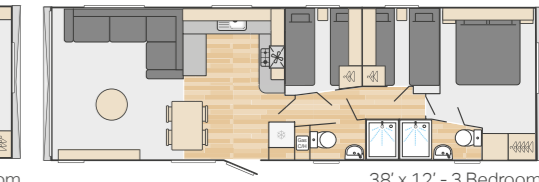
35' x 12' - 2 Bedroom



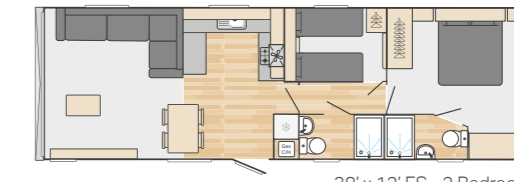
35' x 12' - 3 Bedroom



38' x 12' - 2 Bedroom



38' x 12' - 3 Bedroom



38' x 12' ES - 2 Bedroom

SCANDINAVIAN INTERIOR DESIGN SCHEME	COASTAL INTERIOR DESIGN SCHEME
Toumai stone laminate effect vinyl flooring in kitchen/dining/bathroom(s)	Herringbone beige laminate effect vinyl flooring in kitchen/dining/bathroom(s)
Scandinavian style coffee table with a round top in 'Dust Grey' and tapered legs in 'Nebraska Oak'	X-frame porcelain white coffee table with a washed wood top
Nebraska Oak woodgrain	Tisano oak woodgrain
30mm White Mountain Larch square worktops with matching upstands	30mm Nebraska Oak worktops with matching upstands
Freestanding dining table with White Lilly chairs (two additional folding chairs in three bed models)	Freestanding dining table with Rochelle Toulouse chairs (two additional folding chairs in three bed models)
Scandinavian contemporary black handled furniture design with light and dust grey panels in bedroom(s)	Porcelain membrane pressed framed doors in bedroom(s)

*The model fitted may differ from that shown in images, please check with supplying dealer or park.