

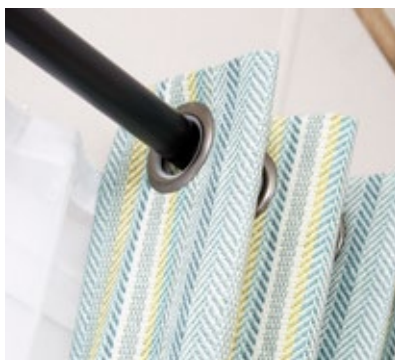


With its 7ft side walls and feature aspect windows, the **Heritage 3** has an exceptionally light and airy living space. The freestanding 2 and 3-seater sofas feature luxurious deep button arms and the contemporary fire surround houses a log burner style fire cabinet.

The dining area adjoining the kitchen has a light wood freestanding table with 4 cream wood dining chairs.

For total peace of mind all our holiday homes and lodges come with a
COMPREHENSIVE WARRANTY

See page 7 for further details



The spacious open plan kitchen in the **Heritage 3** features stunning willow green cabinets and stone-effect contrast tops. This model has an integrated oven and grill, extractor hood and fridge/freezer and black composite sink and mixer tap as standard.

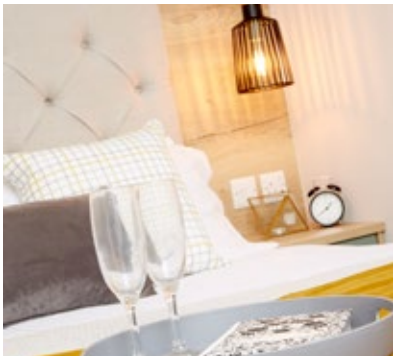


Atlas Heritage 3 illustrated is the 38ft x 12ft – 2 bedroom layout. Shown here with standard matt finish châteaux grey cladding and white PVC windows and doors. The model shown includes optional front French doors.

Note: Deluxe bedding set, lounge scatters, TV and interior accessories are for display purposes only.



The **Heritage 3** benefits from a large master bedroom with king size bed accompanied by a deep buttoned headboard and freestanding furniture in light wood with willow green fronts. The large dressing table comes complete with a tub style stool and circular mirror above.





The **Heritage 3** is available in 2 and 3 bedroom layouts with each bedroom containing two single beds with the same style furniture and headboards as the main bedroom.

The main bathroom features large shower cubicle, a fitted cabinet with wooden splash-back, counter top basin and WC.

All models in the **Heritage 3** range boast an en-suite comprising wash basin and WC to the main bedroom with selected models featuring a shower in addition.



The **Heritage 3** now comes in 7 different layouts with 12ft and 13ft widths and lengths from 36ft to 40ft including the two exciting new twin shower configurations.

This is the ideal choice for those wanting a versatile, spacious holiday home.



The Heritage is ideal for families and the kids will love nothing more than building sandcastles on the beach.



Model illustrated 39ft x 12ft – 2 bed with 2 showers

A Living room with 2-seater and 3-seater sofas and feature aspect windows and optional French doors

B Dining area with free standing dining table and chairs.

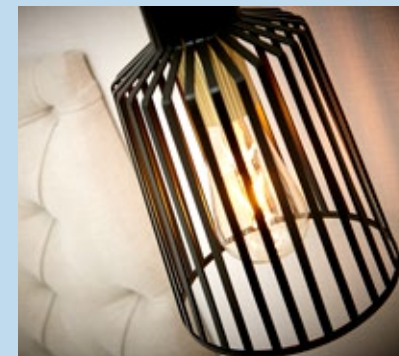
C Fitted kitchen with integrated oven, grill, extractor hood and fridge/ freezer.

D Second bedroom with 2 single beds, bedside table and wardrobe.

E Master bedroom with dressing table, stool and wardrobe.

F Main bedroom ensuite with walk-in shower, wash basin and WC.

G Main bathroom with counter top wash basin, shower cubicle, WC and extractor fan.



STANDARD FEATURES

Matt finish châteaux grey cladding	✓
Low energy lighting	✓
Feature aspect windows	✓
Integrated fridge freezer	✓
Free standing two and three-seater suite with deep button arms	✓
Pull out sofa bed to lounge	✓
Electric fire	✓
Feature fire cabinet	✓
Low energy lighting	✓
Sockets with USB to bedrooms, kitchen and lounge	✓
Freestanding dining table and chairs	✓
Re-circulating electric extractor hood	✓
Integrated electric oven and grill with 4 ring hob with electric ignition	✓
Over bed reading lights	✓
Feature fire cabinet	✓
TV point to master bedroom	✓
Feature dining pendant light	✓
Carpet with underlay	✓
En suite bathroom to all models	✓
Extractor fan to main bathroom/shower room	✓
Exterior light	✓

Please take a moment to choose which options you would like to be included in your new Atlas Heritage.

You can tick the appropriate box, which will help you specify your new holiday home.

Please see the matrix on page 70 for a comprehensive list of options.

POPULAR OPTIONS

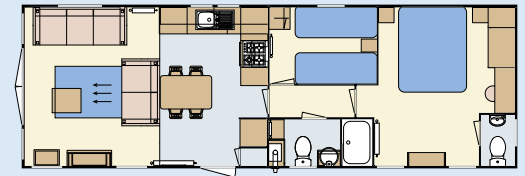
Winter warm pack	
Ultrawarm insulation	
Front french doors	
Fully galvanised chassis	
Pre galvanised chassis	
Upgrade to graphite windows	
Environmental colours	
Environmental colours complete with graphite windows & doors	
Rigid PVC cladding white windows	
Rigid PVC cladding colour windows	
Canaxel cladding white windows	
Canaxel cladding coloured windows	
Timber cladding oak windows	
Integrated microwave	
Integrated dishwasher*	
Integrated washer/dryer*	
Integrated washing machine*	
Wine cooler (13ft models only)	
Coffee table	
Lounge footstool	
Lounge scatter cushions	
Wall mounted tv point in lounge	
Plinth heaters & heated towel rails	
Lift up double bed (gas strut) base	
Gazunder twin bed	
TV point to twin bedroom	
Standard bedding set	
Deluxe bedding set	

*Only 1 full size appliance per model

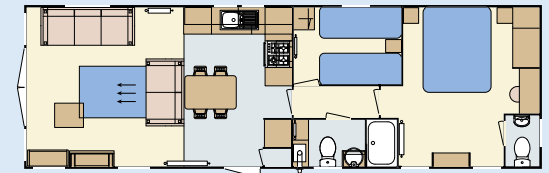
WINTER WARM PACK to include

Central heating	
Double glazing	

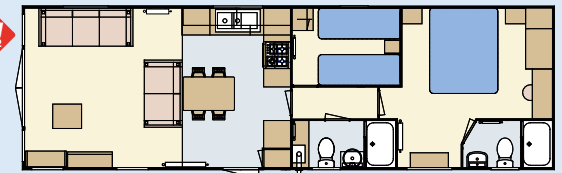
FLOOR PLANS



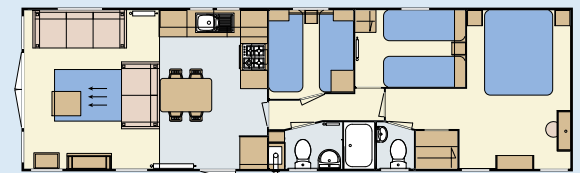
36 x 12 - 2 bedroom/6 berth



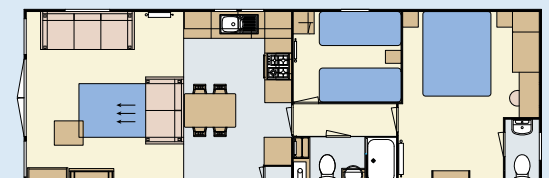
38 x 12 - 2 bedroom/6 berth



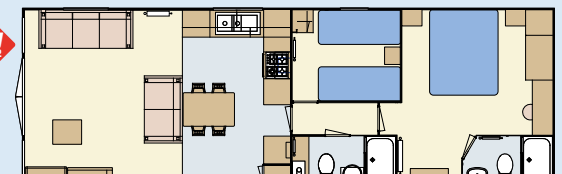
39 x 12 - 2 bedroom/6 berth - 2 shower



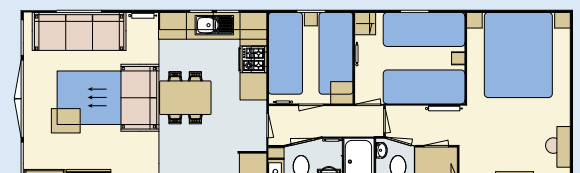
40 x 12 - 3 bedroom/8 berth



38 x 13 - 2 bedroom/6 berth



39 x 13 - 2 bedroom/6 berth - 2 shower



40 x 13 - 3 bedroom/8 berth