



The **Chorus 5** is a perennial favourite with its open plan living area featuring elegant L-shaped sofa with armrest featuring USB charging socket, light wood wall panels and furniture with stylish grey drawer fronts and modern electric fire.

The adjoining dining area has a free standing light wood table top with black metal legs and coordinating black wood dining chairs. This space is separated from the entrance by a built-in shelving unit.

For total peace of mind all our holiday homes and lodges come with a

COMPREHENSIVE WARRANTY

See page 7 for further details



The fitted kitchen in the **Chorus 5** is stunning. Its focal point is the copper coloured glass splash back with stainless steel and glass overhead vented extractor. There is an electric oven with grill, 4 ring gas hob and integrated fridge/freezer included as standard.



The **Chorus 5** illustrated is the 36ft x 12ft – 2 bedroom. It is shown here with light grey aluminium cladding and white PVC windows and doors and includes optional front French doors.



Note: Deluxe bedding set, lounge scatters, TV and interior accessories are for display purposes only.



The **Chorus 5** main bedroom is truly stunning. The graphite built in wardrobes are complemented by matching over-bed storage above the kingsize bed. A dressing table with tub style stool and feature strip lighting to the headboard complete a remarkable sleep space.





The second bedroom also features graphite fitted furniture and twin beds. The **Chorus 5** has room to sleep the whole family and store all those 'essentials' you need when you take that well deserved break.

The **Chorus 5** main bathroom has a large shower cubicle, wash basin with mirrored cabinet above, WC and extractor fan.

With the exception of the 28ft model, all **Chorus 5** holiday homes have an en-suite wash basin and WC to the main bedroom.



The **Chorus 5** comes complete with central heating, double glazing and extra insulation as standard to guarantee you'll enjoy your time away whatever the weather has in store.



What could be better? A family barbecue at your own holiday home. And with the Chorus, there's plenty of room for them all to enjoy it.



Model illustrated 39ft x 12ft – 2 bed/2 shower

A Living room with L-shaped sofa and electric fire with modern black surround.

B Dining area with free standing dining table and four chairs.

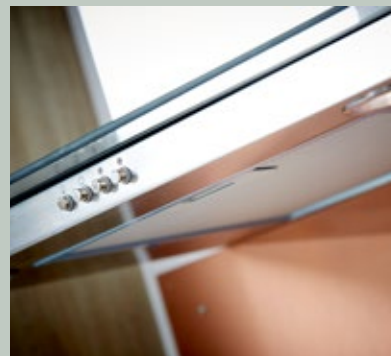
C Fitted kitchen with electric oven/grill, 4 ring gas hob and extractor hood complete with integrated fridge/freezer.

D Twin bedroom with single beds, wardrobe and feature strip lighting.

E Master bedroom with kingsize bed, graphite colour fitted wardrobes, dressing table with stool and feature strip lighting.

F Main bedroom ensuite with wash basin and WC. The 39ft x 12ft model features an additional second shower.

G Main bathroom with wash basin, shower cubicle, WC and extractor fan.



STANDARD FEATURES

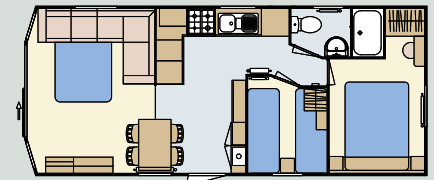
Central heating	✓
PVC double glazing	✓
Extra insulation	✓
Exterior light	✓
Low energy lighting	✓
Sockets with USB port	✓
Integrated electric oven and grill with 4 ring hob and electric ignition	✓
Cooker extractor vented to exterior	✓
L-shape lounge seating with footstool	✓
Free standing dining table and chairs	✓
En suite WC to master bedroom	✓
Feature strip lighting to bedrooms	✓
Extractor fan to main bathroom/shower room	✓
Integrated fridge freezer	✓
Pull out bed to lounge	✓
Appliance shelf and socket	✓

POPULAR OPTIONS

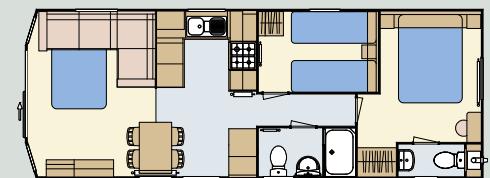
Front french doors
Fully galvanised chassis
Pre galvanised chassis
Ultrawarm insulation
Upgrade to graphite windows
Environmental colours
Environmental colours complete with graphite windows & doors
Rigid PVC cladding white windows
Rigid PVC cladding colour windows
Canoxel cladding white windows
Canoxel cladding coloured windows
Timber cladding oak windows
Integrated microwave
Integrated dishwasher*
Integrated washer/dryer*
Integrated washing machine*
Coffee table
Lounge scatter cushions
Plinth heaters & heated towel rails
Lift up double bed (gas strut) base
Gazunder twin bed
TV points & co-ax to bedrooms
Hallway door
Standard bedding set
Deluxe bedding set

*Only 1 full size appliance per model

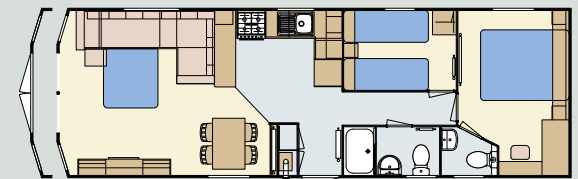
FLOOR PLANS



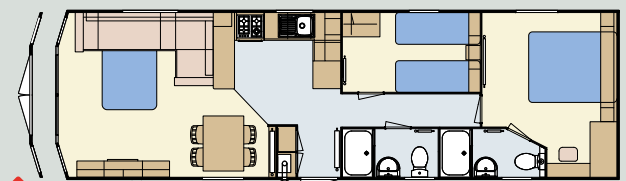
28 x 12 - 2 bedroom/6 berth



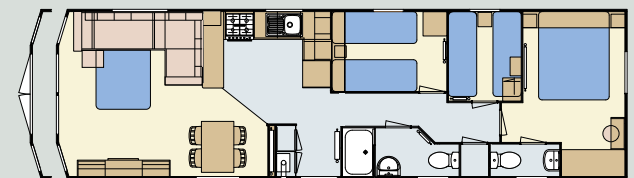
32 x 12 - 2 bedroom/6 berth



36 x 12 - 2 bedroom/6 berth



39 x 12 - 2 bedroom/6 berth - 2 shower model



40 x 12 - 3 bedroom/8 berth

Please take a moment to choose which options you would like to be included in your new Atlas Chorus.

You can tick the appropriate box, which will help you specify your new holiday home.

Please see the matrix on page 70 for a comprehensive list of options.